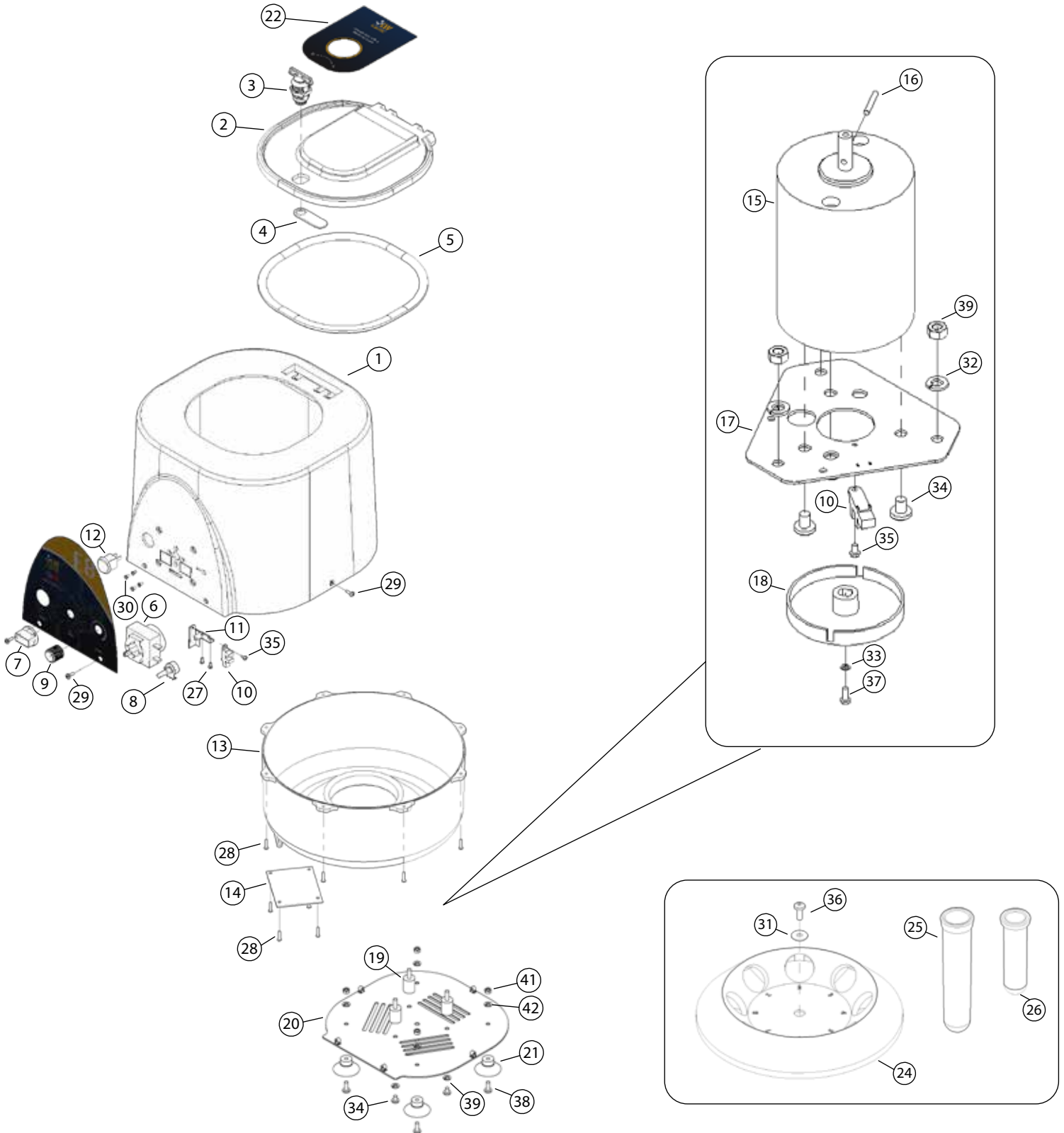


USA E8 Centrifuge

Parts Diagram



Parts List

Item No.	Part Number	Description	QTY
1	100541	Body	1
2	100621	Lid	1
3	100073	Latch	1
4	100473	Cam Latch Plate	1
5	100204	Body & Lid Gasket	1
6	100203	30 Minute Timer	1
7	100540	Timer Knob	1
*8	100519	Potentiometer	1
*9	100564	Potentiometer Knob	1
10	100052	IR Sensor	2
11	100553	IR Sensor Bracket	1
12	100099	Illuminated Power Switch	1
13	100207	E8 Bowl	1
14	100475	Motor Drive Board	1
15	100403	Motor; 80 W	1
16	100042	Motor Shaft Pin	1
17	100552	Motor Mount Plate	1
18	100087-B	Speed Sensor Wheel	1
19	100294	Motor Vibration Absorber	3
20	100206	E8 Base Plate	1
21	100004	Rubber Foot	4
22	100492	E8 Lid Label	1
*23	100507	E8 Variable Label	1
23	100508	E8 Fixed Label	1

* Item for Variable Speed model ONLY.



Picture of Rev B foot

Limited number of units were built with foot shown. Item and hardware can be replaced by components listed.

Item No.	Part Number	Description	QTY
24	100094	8 Place Fixed Rotor	1
25	100097	8 Place Fixed Rotor Tube Shield	8
26	100555	Tube Shield Insert	8
27	100088	#4 x 0.25" Thread Rolling Screw	2
28	100089	#4 x 0.5" Thread Rolling Screw	12
29	100530	6-32 x 0.375" PHMS, Screw	5
30	100060	FHMS M3 x 0.5 x 6, Screw	4
31	100404	M4 Fender Washer	1
32	100067	Split Lock Washer M6	10
33	100091	Split Lock Washer M3	1
34	100063	PHMS M6 x 1.0 x 8, Screw	6
35	100061	PHMS M3 x 0.5 x 5, Screw	2
36	100090	PHMS M4 x 0.7 x 10, Screw	1
37	100398	PHMS M3 x 0.5 x 8, Screw	1
38	100064	PHMS M6 x 1.0 x 16, Screw	4
39	100057	Hex Nut M6 x 1.0	7
**40	100525	Power Jack Wiring Assembly	1
**41	100528	Power Connector Wiring Assembly	1
**42	100101	Lid Latch IR Sensor Cable	1
**43	100271	Speed Wheel IR Sensor Cable	1
**44	100518	Timer Cable Assembly	1
**45	100556	Power Requirement Specification Label	1
**46	100054	8A Fuse	1
**47	100100	Power Adapter; 12 V; 6.0 A	1
**48	100055	Line Power Cord	1

** Items not shown.