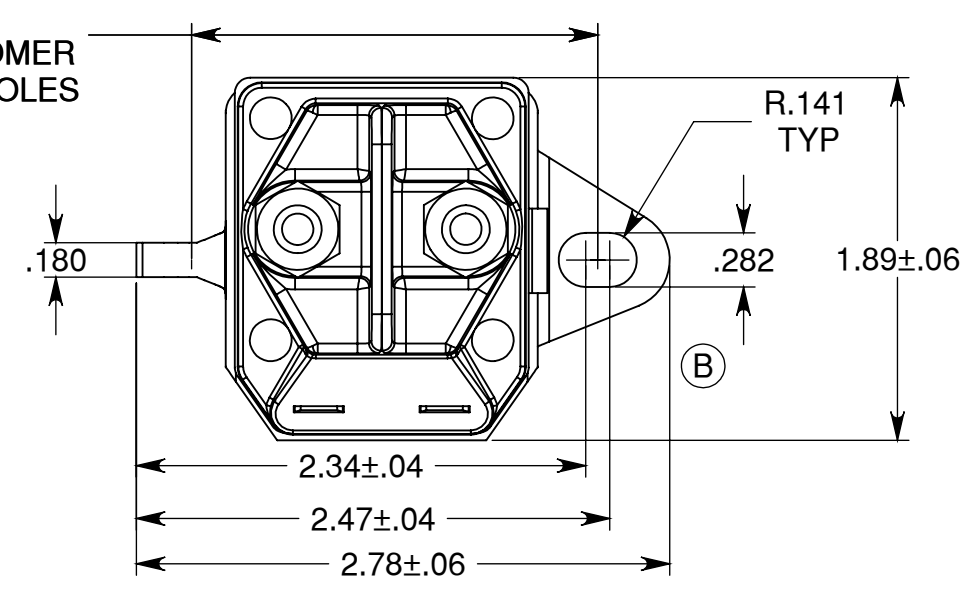


THIS DRAWING IS PROPRIETARY AND CONFIDENTIAL PROPERTY OF TROMBETTA AND IS LOANED IN CONFIDENCE WITH THE UNDERSTANDING THAT IT WILL BE KEPT CONFIDENTIAL AND USED ONLY FOR THE PURPOSE FOR WHICH IT IS LOANED.

2.12 REF
2.11 REF
C-C CUSTOMER MOUNTING HOLES

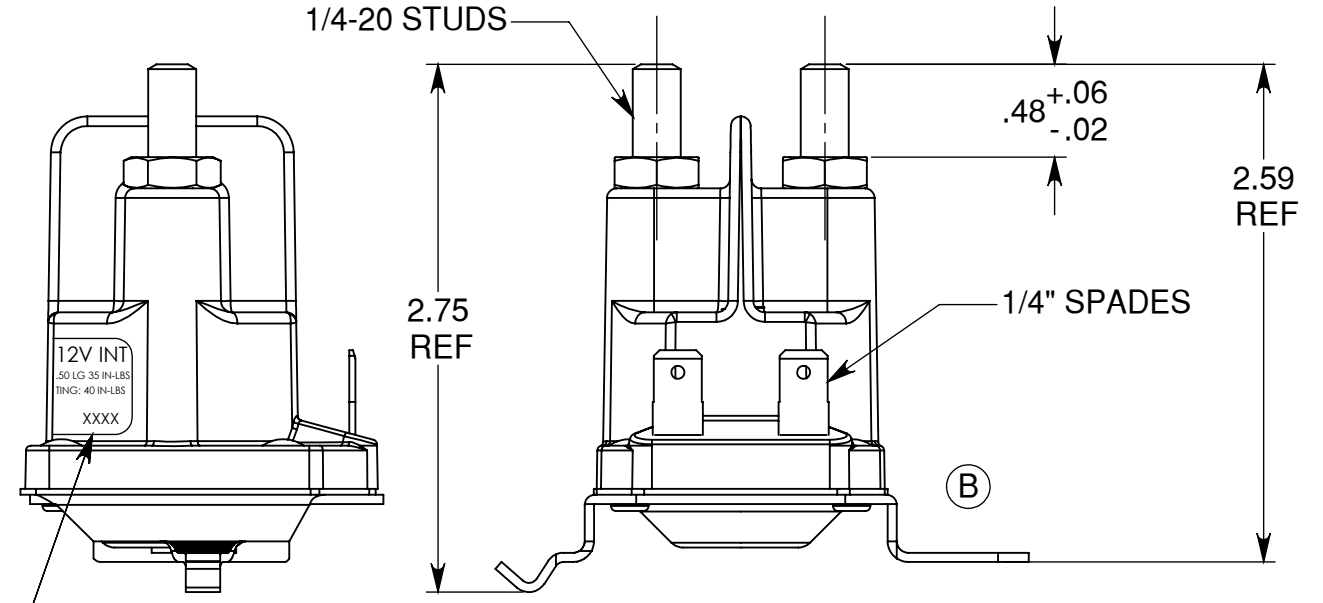


RATED VOLTAGE (VDC)	DUTY	MAX TIME "ON"	MIN. PULL-IN VOLTAGE @ 25C (VDC)	MIN HOLD VOLTAGE @ 25C (VDC)	COIL @ 25C RESISTANCE (OHMS)	CARRY CURRENT AMPS INDUCTIVE LOAD (AMPS)	**MAX IN-RUSH
12 VDC	15%	20 SEC.	8.5 VDC	4	3.2-3.8	200	300

(C)

** RISE TIME GREATER THAN OR EQUAL TO 3M SEC TO 80% OF PEAK INRUSH WITH LINEAR DECAY TO RUN (CARRY) CURRENT LESS THAN OR EQUAL TO .1 SECOND (TYPICAL STARTER MOTOR)

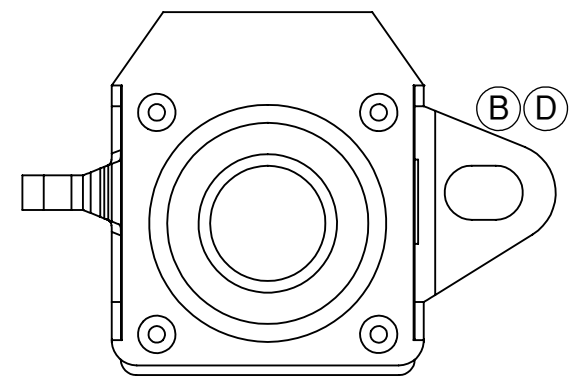
1/4-20 STUDS



NOTES:

1. MILLIVOLT DROP SHALL NOT BE GREATER THAN 500mv @ 100 AMP.
2. TEMPERATURE RANGE FOR PROPER OPERATION SHALL BE BETWEEN -40° TO 150°F.
3. NO ASSEMBLY PROVISIONS REQUIRED.
4. ALL STEEL PARTS SHALL BE YELLOW CHROMATED EXCEPT FOR STEEL PARTS THAT SOLDER MAY BE APPLIED TO. PARTS TO BE YELLOW CHROMATED ARE: BRACKET, PLUNGER, BOBBIN CAN, NUTS & STEEL RIVETS.
5. A MINIMUM CONTROL SUPPLY VOLTAGE OF 8.5 VDC IS REQUIRED DURING CRANKING TO PROPERLY OPERATE THIS SOLENOID SWITCH.
6. TORQUE REQUIREMENTS:
COIL TERMINAL - N/A
COPPER TERMINAL - 35 IN/LBS MAX
7. EHP PART #192507

LABEL
BLACK COLOR LETTERS ON SILVER BACK LABEL



JOB # OPTIONAL
COUNTRY OF ORIGIN
YEAR
WEEK OF YEAR

REV.	DESCRIPTION	BY	ECN	DATE	APP.
D	REMOVED PATENT NUMBER FROM BOTTOM VIEW	CAG	6138	10/27/09	DAH
C	CHANGED COIL RESISTANCE, WAS 3.7-4.2	CAG	6044	3/31/09	DAH
B	UPDATE PER BRKT CHG	JMG	4455	7/14/04	TM

MATERIAL	 862-1241-211-12 CONTACTOR DIMENSIONAL ASSEMBLY	
FINISH		
UNLESS OTHERWISE SPECIFIED .XXX +/- .005 .XX +/- .01 ANG. +/- 1° BREAK ALL EDGES .005-.015 125 FINISH FILLETS .010-.020 RAD.		
DRAWN JMG	SCALE 1:1	DWG. NO.
APPR. TM	DATE 4/28/04	D03898

CONTROL PLAN REQUIRED