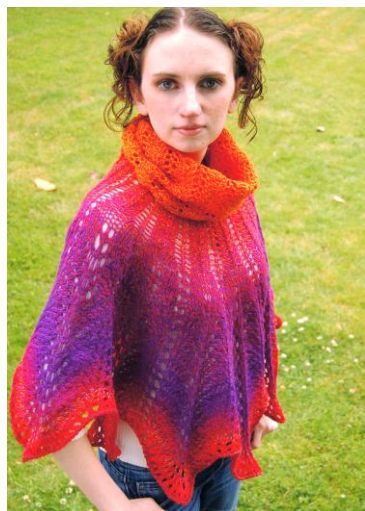




## Evelyn's Glow Cowled Cape

A free download pattern designed by Allison Harding for **skacel collection, Inc.**

A beautiful lady deserves a beautiful piece of lace! Evelyn's Glow was designed for a colorful, creative friend as a thank-you gift for the loan of an amazing spinning wheel. Created to show off the long color changes of *Zauberwolle*, this cowled cape looks equally at home with jeans at the Farmer's Market or topping a silk gown for an evening concert. Wear the cowl up if the night turns chilly.



**SKILL LEVEL:** Intermediate

**YARN WEIGHT:** Worsted

**SIZE AND MATERIALS:**

Size	One Size
Wingspan	47"
Length	34"
Yarn	819 yds (3 balls)

**Featured Yarns:**

**Zauberwolle** by **Schoppel Wolle**, 100% Virgin Merino Wool - 273 yds / 100g. Shown in Color #1536.

**addi Needles:**

4.5 mm (approx US 7) 24" and 40" circular needles  
or size needed to obtain gauge

**Additional Notions:** Tapestry needle, stitch markers

All yarn and needles distributed by **skacel collection, Inc.**

**STITCH PATTERNS:**

**1 x 1 Rib:**

**Row 1:** \*K1, p1, rep from \* to end of row.

**Row 2 (and all remaining rows):** Work as sts appear.

**GAUGE:**

30 sts and 21 rows = 4" x 4" in St st unblocked

*To save time, check your gauge and read all instructions thoroughly before beginning.*

**INSTRUCTIONS:**

**Note:** This piece can either be worked using the charts or the written out text of the charts.

**Edging:**

Using shorter length needle, CO 96 sts (a stretchy cast on such as the Twisted German is recommended). Being careful not to twist sts, join to work in the round and place marker. Slip marker at beg of each rnd.

**Rnd 1:** Purl.

**Rnd 2:** \*K5tog, (k1, yo, k1, yo, k1) all in next st; rep from \* to end of rnd = 96 sts.

**Rnd 3:** Purl.

**Cowl:**

**Rnd 1:** \*Yo, k2, S2KP, k2, yo, k1; rep from \* to end = 96 sts.

**Rnd 2:** Knit.

Repeat Rnds 1 & 2, 37x or until work is desired length for cowl.

**Cape:**

**Notes:** 1) *Body Lace Chart* shows 1 repeat, and there are 12 repeats in each round. Placing a marker between each repeat may aid in working the lace. 2) Switch to longer needle when needed.

**Rnd 1:** Knit.

**skacel collection, Inc.**

Copyright © 2011 - All rights reserved.

[www.skacelknitting.com](http://www.skacelknitting.com)

**Rnd 2:** \*Yo, k7, yo, k1; rep from \* to end of rnd = 120 sts.

**Rnd 3 & 4:** Knit.

**Rnd 5:** \*Yo, k4, yo, k1, yo, k4, yo, k1; rep from \* to end of rnd = 168.

**Rnd 6 & 7:** Knit.

**Rnd 8:** \*Yo, k5, yo, S2KP, yo, k5, yo, k1; rep from \* to end of rnd = 192.

**Rnd 9 - 10:** Knit.

**Rnd 11:** \*Yo, (k2tog) 2x, (k1, yo) 6x, k1, (SSK) 2x, yo, k1; rep from \* to end of rnd = 240.

**Rnd 12 - 13:** Knit.

**Rnd 14:** \*Yo, (k2tog) 3x, (k1, yo) 6x, k1, (SSK) 3x, yo, k1; rep from \* to end of rnd = 264.

**Rnd 15 - 16:** Knit.

**Rnd 17:** \*Yo, (k2tog) 4x, (yo, k1) 5x, yo, (SSK) 4x, yo, k1; rep from \* to end of rnd .

**Rnd 18 - 19:** Knit.

**Rnd 20:** \*Yo, (k2tog) 3x, (k1, yo) 8x, k1, (SSK) 3x, yo, k1; rep from \* to end of rnd = 312.

**Rnd 21 - 22:** Knit.

**Rnd 23:** \*Yo, (k2tog) 4x, (k1, yo) 8x, k1, (SSK) 4x, yo, k1; rep from \* to end of rnd = 336.

**Rnd 24 - 25:** Knit.

**Rnd 26:** \*Yo, (k2tog) 5x, (yo, k1) 7x, yo, (SSK) 5x, yo, k1; rep from \* to end of rnd .

**Rnd 27 - 28:** Knit.

**Rnd 29:** \*Yo, (k2tog) 4x, (k1, yo) 10x, k1, (SSK) 4x, yo, k1; rep from \* to end of rnd = 384.

**Rnd 30 - 31:** Knit.

**Rnd 32:** \*Yo, (k2tog) 5x, (k1, yo) 10x, k1, (SSK) 5x, yo, k1; rep from \* to end of rnd = 408.

**Rnd 33 - 34:** Knit.

**Rnd 35:** \*Yo, (k2tog) 6x, (yo, k1) 9x, yo, (SSK) 6x, yo, k1; rep from \* to end of rnd.

**Rnd 36 - 37:** Knit.

**Rnd 38:** \*Yo, (k2tog) 5x, (k1, yo) 12x, k1, (SSK) 5x, yo, k1; rep from \* to end of rnd = 456.

**Rnd 39 - 40:** Knit.

**Rnd 41:** \*Yo, (k2tog) 6x, k1 (yo, k1) 12x, , (SSK) 6x, yo, k1; rep from \* to end of rnd = 480.

**Rnd 42 - 43:** Knit.

**Rnd 44:** \*Yo, (k2tog) 7x, (yo, k1) 11x, yo, (SSK) 7x, yo, k1; rep from \* to end of rnd = 480.

**Rnd 45 - 46:** Knit.

**Rnd 47:** \*Yo, (k2tog) 6x, (k1, yo) 14x, k1, (SSK) 6x, yo, k1; rep from \* to end of rnd = 528.

**Rnd 48 - 49:** Knit.

**Rnd 50:** \* Yo, (k2tog, yo) 10x, (k1, yo) 3x, (SSK, yo) 10x, k1; rep from \* to end of rnd = 576.

**Rnd 51:** Knit.

### Bind off

**BO Rnd 1:** K1, \*k1, slip 2 sts on RH needle to LH needle, k2tog; rep from \* to end of rnd.

Break yarn leaving tail for weaving in. Pull tail through last st to finish.

### FINISHING:

Wet block lightly: Wingspan 47", Cowl 18". Weave in tails.

### ABBREVIATIONS:

<b>approx</b>	approximate(ly)
<b>BO</b>	Bind Off
<b>CO</b>	Cast On
<b>k</b>	knit
<b>k2tog</b>	knit two together
<b>LH</b>	Left Hand
<b>p</b>	purl
<b>rep</b>	repeat
<b>RH</b>	Right Hand
<b>rnd</b>	round
<b>RS</b>	right side
<b>S2KP</b>	Slip 2 stitches knit wise, Knit 1 stitch, Pass slipped stitches over stitch just knitted (decreases 2 stitches).
<b>SSK</b>	Slip 2 stitches knit wise, one at a time, from the left needle to the right needle, then insert the left needle into the front of the slipped stitches and knit them together (decreases 1 stitch).
<b>st(s)</b>	stitch(es)
<b>St st</b>	Stockinette Stitch
<b>yo</b>	yarn over
<b>x</b>	times

### Legend

	k
	yo
	k2tog
	ssk
	S2KP
	no stitch

### Cowl Lace Chart

								2
	○			∧			○	1

# Body Lace Chart

