



DIRECT-VENT FIREPLACE

Rushmore DVCT50CBP

Spec Sheet



GLASS VIEWING AREA

36 1/2" W x 47 3/8" H

ACTUAL DIMENSIONS

58" W x 48 1/2" H x 24 3/8" D

INCLUDES

- TruFlame Technology
- Multi-Function Remote
- Fireplace Barrier Screen
- Noncombustible Board

REQUIRES

- Liner
- Log Set: Forest Timber

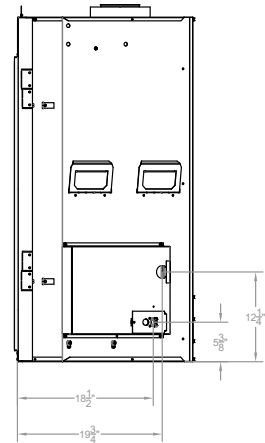
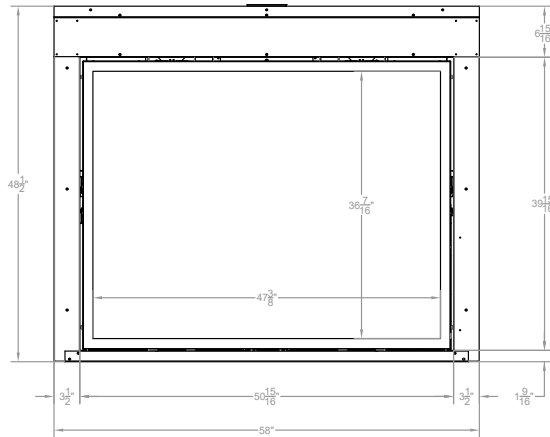
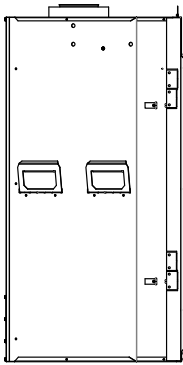
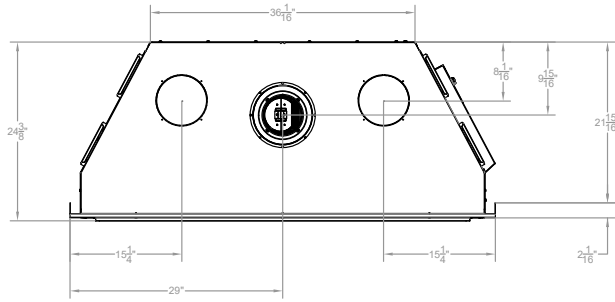
TECHNICAL INFORMATION

- Maximum heat output:
56,500 BTUs (Nat), 55,000 BTUs (LP)
- Weight: 397 lb.
- Clearances
 - Back: 0"
 - Side Wall: 2"
 - Floor: 0"
 - Top of Unit: 36"
 - Top Framing Edge: 0"
- Type of Gas: LP or Natural
- Iron Pipe Size: 1/2-inch
- Ignition Systems: Multi-Function
- Vent Size: 5 x 8-inch Top Vent Only
(12-inch rise before horizontal)

FIELD INSTALLED ACCESSORIES

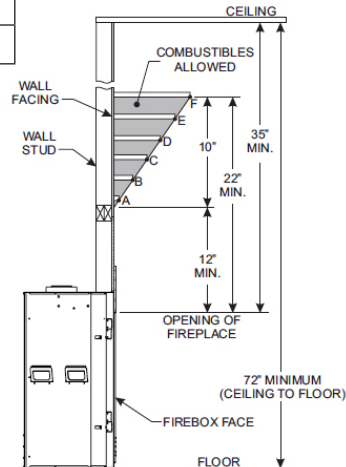
- Liners: Black Porcelain; Old World Stone; Fire Cracked Brick
- Twin Blower
- Andirons: Matte Black

DVCT50CBP



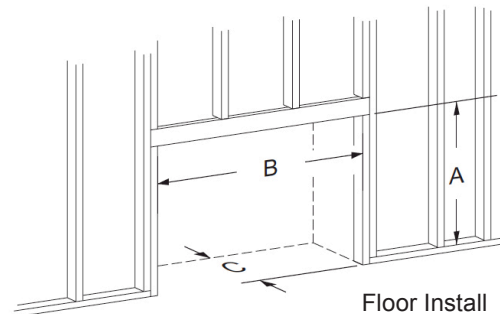
Clearance to Combustibles (in inches)

	Distance from Wall Facing	Distance from Top of Opening
A	2	12
B	4	13-5/8
C	6	15-5/16
D	8	17
E	10	18-5/8
F	12	22



Framing Dimensions (in inches)

Height (A)	58 1/2
Width (B)	58 1/2
Depth (C)	24



Empire is committed to continuous product improvement; specifications are subject to change without notice. Dimensions in this brochure are approximate; read and follow the framing dimensions in the owners manual supplied with your Empire product. Flame size, shape, and color will vary from photos. Our mantels feature natural veneers and hand-rubbed finishes – wood grain and color will vary. Adjust light levels and use "natural light" incandescent bulbs to enhance the dramatic look for your wooden mantel.

Member of the following industry associations:



This appliance is design-certified to the ANSI standard by:



SINCE 1932

Empire Comfort Systems Inc.
918 Freeburg Ave.

Belleville, IL 62220-2623

info@empirecomfort.com

04/19

The Empire Comfort Systems and White Mountain Hearth names and logos are registered U.S. trademarks.