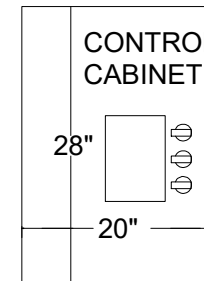
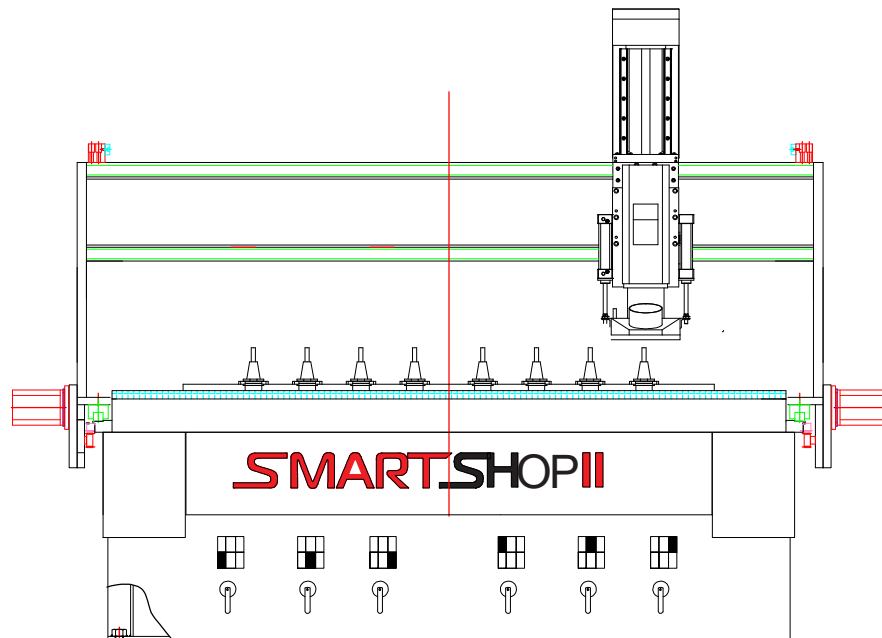
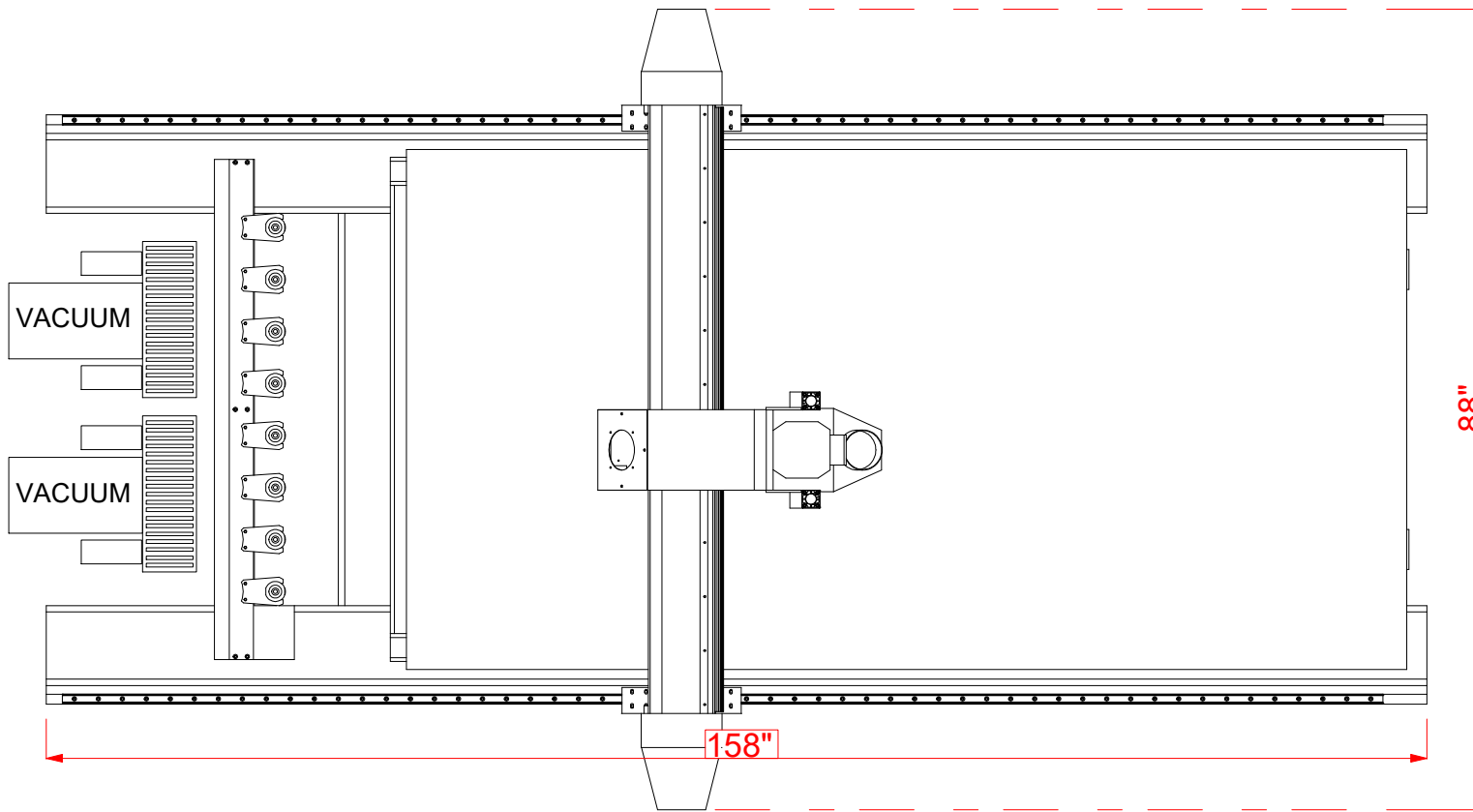


# LAGUNA

## SMARTSHOP II 5x10

**5.5HP HETICO ATC  
AIR COOLED SPINDLE**

**{MCNC SS2 5X10 5.5HP Hiteco ready ATC-0158} REV2**



SPECIFICATION:		DRAWN,S.B._4/7/2016_REV,1
POWER REQUIREMENTS.	See Below,varies on vacuum choice.	
FOOTPRINT.	88" W X 158" L	
WORKING AREA.	61" X 121"	
GANTRY CLEARANCE.	12"	
SPINDLE.	5.5hp Hiteco air cooled SPINDLE	
SPINDLE RPM.	3,000-24,000	
RAPID TRAVEL.	900 IPM	
MAXIMUM CUTTING SPEED.	700 IPM	
DUST PORT DIAMETER.	4"	
PRECISION HELICAL RACK & PINION. DRIVE SYSTEM FOR X AND Y AXES	25MM HEAVY DUTY LINEAR BEARING,ALL AXES	
CONTROLLER.	B+R PP65 STEPPER PACKAGE	
TOOL CONE	ISO30	
SOLID STATE HOME SWITCH'S.	YES	
HEAVY DUTY WELDMENT TUBULAR STEEL FRAME.	3500 POUNDS	
CENTRALIZED LUBRICATION SYSTEM FOR ALL AXES.	YES	
VACUUM TABLE	6 ZONES	
VACUUM OPTIONS	2 vacuums for 5x10 table preferred.	POWER REQUIRMENTS:
2 pcs,10hp stock regen vacuum_3 phase		220v,3 Phase,60 amps
2 pcs,10hp stock regen vacuum_1 Phase		220v,1 ph,70 amps_Requires 2 15hp VFD's
2 pcs,8.6hp Becker vacuum_3 Phase		220v,3 Phase,70 amps
2 pcs,12hp Becker vacuum_3 Phase		220v,3 Phase,80 amps