



Essential Validation Services

Sample:

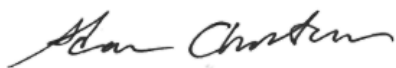
Client: | Floracopia
Sample: | Frankincense Myrrh co-distill (Boswellia rivae Commiphora)
Batch # | 60718
CAS Number |
Type: | Essential Oil

Conclusion:

- No adulterants, diluents, or contaminants were detected via this method.
- This oil meets the expected profile for genuine essential oil of Frankincense Myrrh co-distill (Boswellia rivae Commiphora).



X



Validated By:

Essential Validation Services

747 SW 2nd Ave, Gainesville, FL 32601

Phone: 317-361-5044 E-mail: Adam@essentialvalidationservices.com

Summary of Analyses

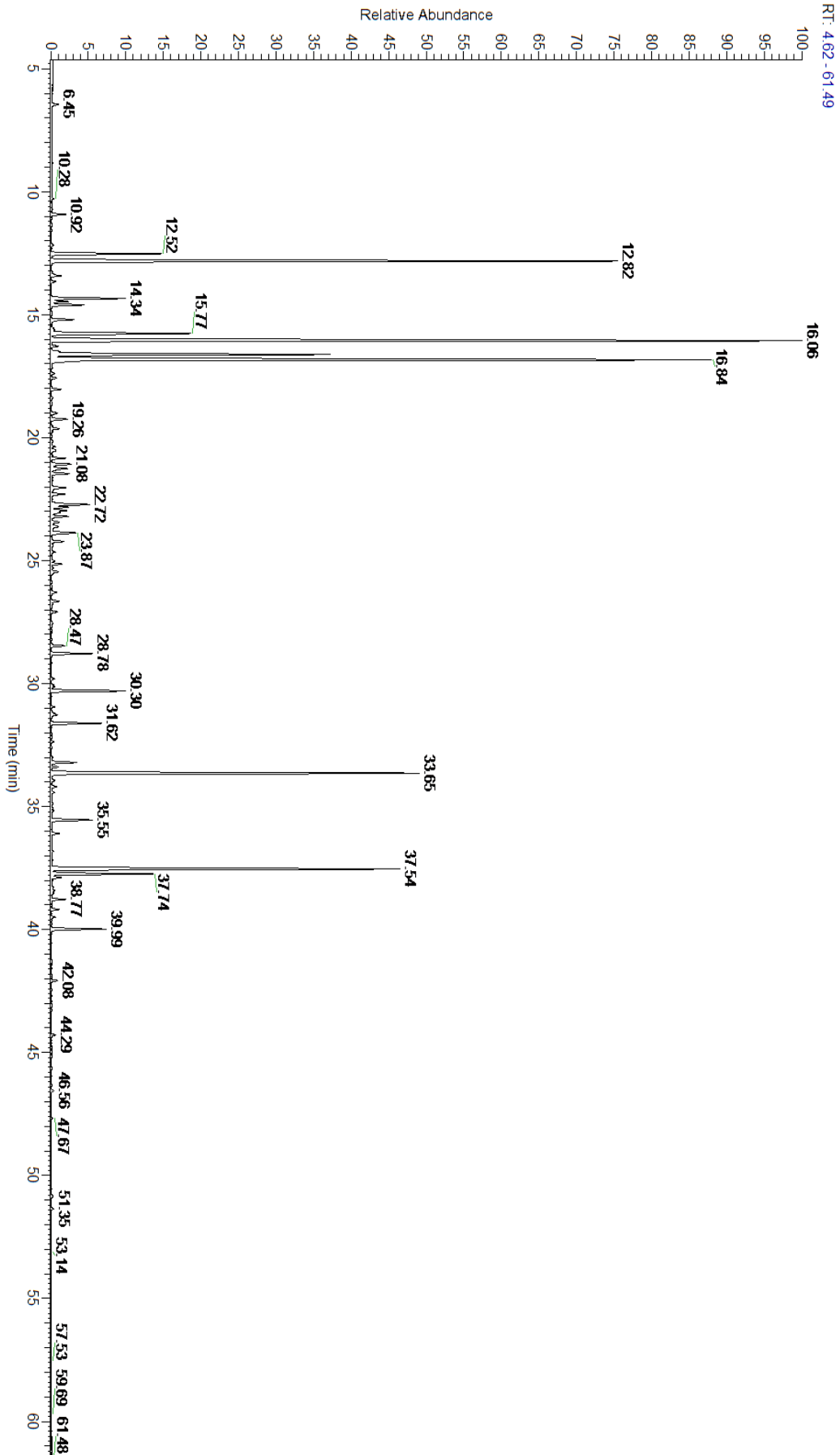
A fresh sample of Frankincense Myrrh co-distill (Boswellia rivae Commiphora) Essential Oil (10 uL in .5to.5 mL Hexane + ETOH) was prepared and analyzed via split injection GC/EI-MS.

Main Compounds	Percentages
delta-3-Carene	18.69%
Limonene	15.58%
alpha-Pinene	12.63%
Curzerene	8.54%
Furanoedesma-1,3-diene	8.25%
para-Cymene (Co-Eluting)	6.36%
alpha-Phellandrene	3.30%
alpha-Thujene	2.39%
Furanodiene	2.24%
beta-Elemene	1.54%
Verbenene	1.53%
gamma-Elemene	1.09%
Terpinen-4-ol	0.94%

Monoterpenes	Sesquiterpenes	Monoterpenols	Sesquiterpenols	Ketones
63.66%	4.95%	4.03%	0.21%	0.52%
Esters	Ethers	Aldehydes	Phenols	Other
0.82%	20.39%	0.22%	0.00%	5.20%



- Monoterpenes ■ Sesquiterpenes ■ Monoterpenols
- Sesquiterpenols ■ Ketones ■ Esters
- Ethers ■ Phenols ■ Other



Total Percentage		94.96%			
Peak Number	RT	Area %	Compound Name	RI	Chemical Family
1	12.17	0.03%	Hashishene	922.00	Monoterpene
2	12.52	2.39%	alpha-Thujene	927.80	Monoterpene
3	12.82	12.63%	alpha-Pinene	936.10	Monoterpene
4	13.42	0.24%	Camphene	950.30	Monoterpene
5	13.65	0.09%	Thuja-2,4(10)-diene	953.00	Monoterpene
6	14.34	1.53%	Verbenene	961.00	Monoterpene
7	14.47	0.33%	Sabinene	973.00	Monoterpene
8	14.60	0.70%	beta-Pinene	974.00	Monoterpene
9	15.20	0.50%	Myrcene	989.20	Monoterpene
10	15.61	0.06%	2-Carene	1001.75	Monoterpene
11	15.77	3.30%	alpha-Phellandrene	1002.00	Monoterpene
12	16.06	18.69%	delta-3-Carene	1008.00	Monoterpene
13	16.28	0.13%	alpha-Terpinene	1014.00	Monoterpene
14	16.50	0.13%	meta-Cymene	1022.00	Monoterpene
15	16.62	6.36%	para-Cymene	1024.30	Monoterpene
16	16.84	Co-Eluting	1,8-Cineole	1031.80	Monoterpene Ether
17	16.84	15.58%	Limonene	1029.50	Monoterpene
18	17.15	0.02%	(Z)-beta-Ocimene	1037.80	Monoterpene
19	17.40	0.08%	(E)-beta-Ocimene	1047.70	Monoterpene
20	18.03	0.21%	gamma-Terpinene	1054.00	Monoterpene
21	18.37	0.03%	trans-Sabinene hydrate	1072.00	Monoterpenol
22	19.26	0.38%	Terpinolene	1092.10	Monoterpene
23	19.63	0.17%	Linalool	1099.00	Monoterpenol
24	19.96	0.02%	alpha-Thujone	1106.00	Monoterpene Ketone
25	20.36	0.07%	beta-Thujone	1118.00	Monoterpene Ketone
26	20.50	0.07%	cis-para-Menth-2-en-1-ol	1118.25	Monoterpenol
27	20.73	0.02%	alpha-Campholene aldehyde	1125.29	Monoterpene Aldehyde
28	20.84	0.28%	Alloocimene	1129.90	Monoterpene
29	21.08	0.49%	cis-Limonene oxide	1136.00	Monoterpene Ether
30	21.26	0.44%	trans-Pinocarveol	1143.75	Monoterpenol
31	21.47	0.40%	trans-Verbenol	1149.00	Monoterpenol
32	22.04	0.34%	para-Mentha-1,5-dien-8-ol	1163.00	Monoterpenol
33	22.29	0.29%	Borneol	1168.71	Monoterpenol
34	22.72	0.94%	Terpinen-4-ol	1180.57	Monoterpenol
35	22.96	0.35%	para-Cymen-8-ol	1185.25	Monoterpenol
36	23.05	0.20%	Cryptone	1187.33	Monoterpene Ketone
37	23.20	0.35%	alpha-Terpineol	1191.71	Monoterpenol
38	23.43	0.19%	Myrtenol	1198.00	Monoterpenol
39	23.87	0.64%	Octyl acetate	1211.00	Aliphatic Ester
40	24.22	0.27%	trans-Carveol	1223.14	Monoterpenol
41	24.65	0.07%	cis-Carveol	1232.25	Monoterpenol
42	25.01	0.07%	Cuminal	1243.00	Monoterpene Aldehyde
43	25.14	0.23%	Carvone	1248.14	Monoterpene Ketone

