



Essential Validation Services



Sample:

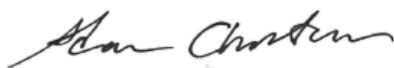
Client: | Floracopeia
Sample: | Lavender Kashmir (Lavandula angustifolia)
Batch # | LAKA17121301
CAS Number | 8000-28-0
Type: | Essential Oil

Conclusion:

- No adulterants, diluents, or contaminants were detected via this method.
- This oil meets the expected profile for genuine essential oil of Lavender Kashmir (Lavandula angustifolia).



X



Validated By:

Essential Validation Services

747 SW 2nd Ave, Gainesville, FL 32601

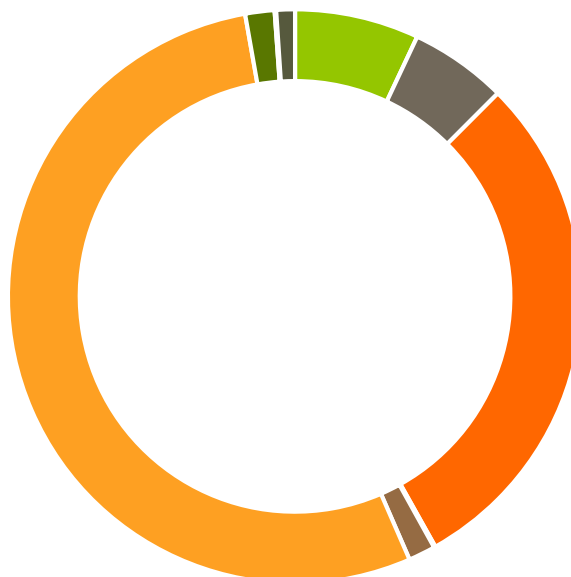
Phone: 317-361-5044 E-mail: Adam@essentialvalidationservices.com

Summary of Analyses

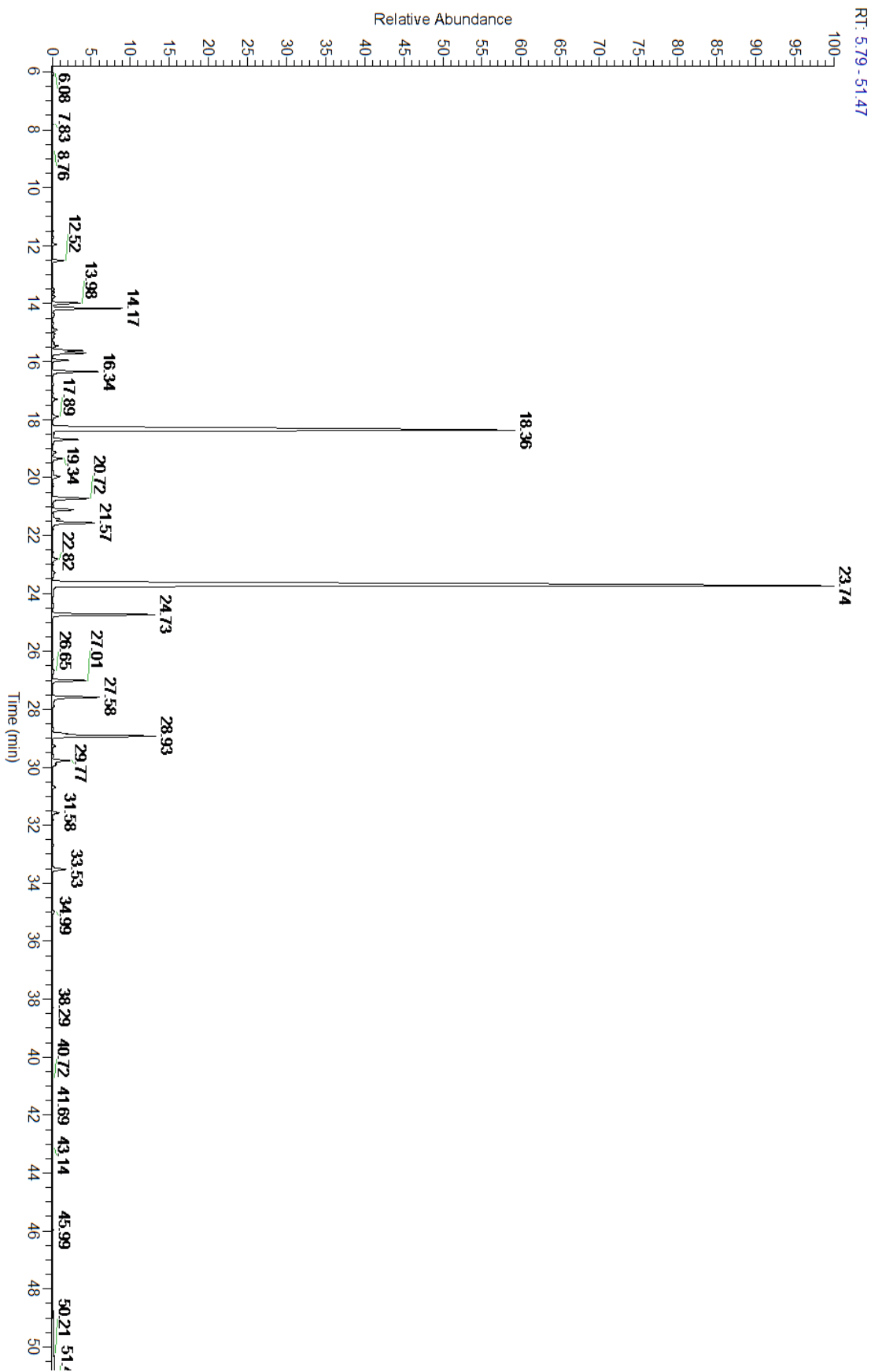
A fresh sample of Lavender Kashmir (Lavandula angustifolia) Essential Oil (10 uL in .5to.5 mL Hexane + ETOH) was prepared and analyzed via split injection GC/EI-MS.

Main Compounds	Percentages
Linalyl acetate	46.39%
Linalool	24.99%
beta-Caryophyllene	3.66%
Lavandulyl acetate	3.47%
Myrcene	2.14%
Geranyl acetate	1.76%
alpha-Terpineol	1.69%
(E)-beta-Ocimene	1.55%
Borneol	1.51%
1,8-Cineole	1.12%
Neryl acetate	1.09%
Limonene	1.04%
Octan-3-one	0.88%

Monoterpenes	Sesquiterpenes	Monoterpenols	Sesquiterpenols	Ketones
7.00%	5.49%	29.38%	0.08%	1.52%
Esters	Ethers	Aldehydes	Phenols	Other
53.74%	1.65%	0.09%	0.00%	1.05%



- Monoterpenes
- Sesquiterpenes
- Monoterpenols
- Sesquiterpenols
- Ketones
- Esters
- Ethers
- Phenols
- Other





Total Percentage		99.12%			
Peak Number	RT	Area %	Compound Name	RI	Chemical Family
1	11.49	0.03%	Tricyclene	923.00	Monoterpene
2	11.71	0.03%	alpha-Thujene	927.80	Monoterpene
3	11.96	0.12%	alpha-Pinene	936.10	Monoterpene
4	12.52	0.37%	Camphene	950.30	Monoterpene
5	13.51	0.05%	Sabinene	973.00	Monoterpene
6	13.61	0.06%	beta-Pinene	974.00	Monoterpene
7	13.75	0.08%	1-Octen-3-ol	980.00	Aliphatic Alcohol
8	13.98	0.88%	Octan-3-one	981.00	Aliphatic Ketone
9	14.17	2.14%	Myrcene	989.20	Monoterpene
10	14.38	0.09%	3-Octanol	992.00	Aliphatic Alcohol
11	14.68	0.03%	alpha-Phellandrene	1002.00	Monoterpene
12	14.91	0.14%	delta-3-Carene	1008.00	Monoterpene
13	15.04	0.09%	Hexyl acetate	1009.00	Aliphatic Ester
14	15.16	0.05%	alpha-Terpinene	1014.00	Monoterpene
15	15.37	0.05%	ortho-Cymene	1021.33	Monoterpene
16	15.45	0.20%	para-Cymene	1024.30	Monoterpene
17	15.62	1.04%	Limonene	1029.50	Monoterpene
18	15.71	1.12%	1,8-Cineole	1031.80	Monoterpene Ether
19	15.95	0.51%	(Z)-beta-Ocimene	1037.80	Monoterpene
20	16.34	1.55%	(E)-beta-Ocimene	1047.70	Monoterpene
21	16.77	0.04%	gamma-Terpinene	1054.00	Monoterpene
22	17.12	0.02%	trans-Sabinene hydrate	1072.00	Monoterpenol
23	17.30	0.16%	cis-Linalool oxide (5) (furanoid)	1075.10	Monoterpenol
24	17.89	0.25%	Terpinolene	1092.10	Monoterpene
25	18.36	24.99%	Linalool	1099.00	Monoterpenol
26	18.69	0.81%	1-Octenyl-3 acetate	1107.00	Monoterpene Ester
27	19.13	0.13%	Octan-3-yl acetate	1124.00	Aliphatic Ester
28	19.34	0.34%	Alloocimene	1129.90	Monoterpene
29	19.97	0.30%	Camphor	1147.55	Monoterpene Ketone
30	20.72	1.51%	Borneol	1168.71	Monoterpenol
31	21.11	0.75%	Terpinen-4-ol	1180.57	Monoterpenol
32	21.28	0.05%	para-Cymen-8-ol	1185.25	Monoterpenol
33	21.43	0.29%	Cryptone	1187.33	Monoterpene Ketone
34	21.57	1.69%	alpha-Terpineol	1191.71	Monoterpenol
35	22.82	0.21%	Nerol	1230.67	Monoterpenol
36	23.28	0.09%	Cuminal	1243.00	Monoterpene Aldehyde
37	23.38	0.05%	Carvone	1248.14	Monoterpene Ketone
38	23.74	46.39%	Linalyl acetate	1263.80	Monoterpene Ester
39	24.73	3.47%	Lavandulyl acetate	1285.00	Monoterpene Ester
40	27.01	1.09%	Neryl acetate	1362.90	Monoterpene Ester
41	27.58	1.76%	Geranyl acetate	1378.50	Monoterpene Ester
42	27.89	0.06%	7-epi-Sesquithujene	1398.10	Sesquiterpene
43	28.67	0.04%	cis-alpha-Bergamotene	1411.50	Sesquiterpene



44	28.84	0.43%	alpha-Santalene	1426.50	Sesquiterpene
45	28.93	3.66%	beta-Caryophyllene	1427.14	Sesquiterpene
46	29.27	0.11%	trans-alpha-Bergamotene	1435.00	Sesquiterpene
47	29.77	0.70%	(E)-beta-Farnesene	1456.29	Sesquiterpene
48	29.91	0.15%	alpha-Humulene	1461.43	Sesquiterpene
49	30.69	0.11%	Germacrene D	1484.71	Sesquiterpene
50	31.58	0.23%	gamma-Cadinene	1515.29	Sesquiterpene
51	33.53	0.53%	Caryophyllene oxide	1594.86	Sesquiterpene Ether
52	34.35	0.01%	1,10-di-epi-Cubenol	1612.29	Sesquiterpenol
53	34.99	0.07%	T-Cadinol	1640.43	Sesquiterpenol

ESSENTIAL VALIDATION SERVICES | 747 SW 2ND AVE GAINESVILLE, FLORIDA 32601 | 317-361-5044