



Kid Seta Print Summer Shawl

A free download pattern from Schulana for **skacel collection, Inc.**



addi Needles:

4.5 mm (approx US 7) 24" circular needle
or size needed to obtain gauge.

Additional Notions:

Tapestry needle

All yarn and needles distributed by skacel collection, Inc.

GAUGE: 24 sts and 27 rows = 4" x 4" in Lace Pattern

**To save time, check your gauge
and read all instructions thoroughly before beginning.**

INSTRUCTIONS:

CO 67 sts.

Work Lace Pattern chart for 150cm and bind off in pattern.

ABBREVIATIONS:

approx approximate(ly)

CO Cast On

k knit

st(s) stitch(es)

TECHNIQUES:

Edge Stitch:

Knit first stitch of row, and with yarn in front, slip last stitch of row.



SKILL LEVEL: Intermediate

YARN WEIGHT: Lace

SIZE AND MATERIALS:

Size	One size
Length x Width	Approx 63" x 12"
Yarn	2 balls (460 yds)

FEATURED YARN:

Featured Yarn: Kid Seta Print by Schulana 70% Kid Mohair, 30%

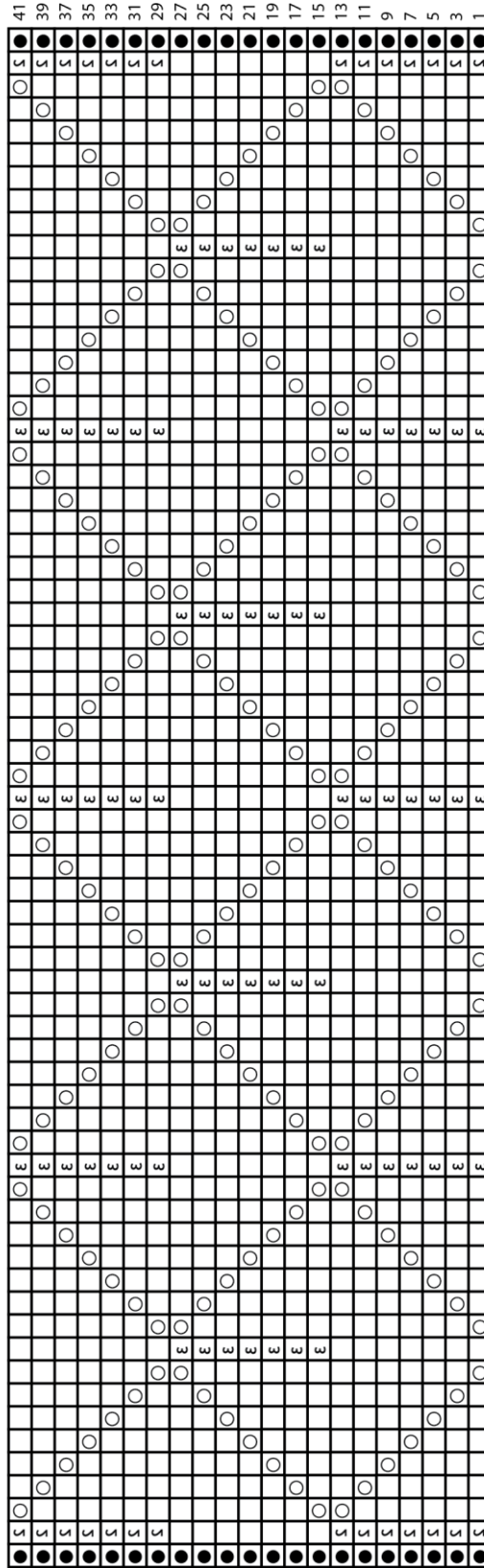
Silk 230 yds / 50g. Shown in Color #400.

skacel collection, Inc.

Copyright © 2011 - All rights reserved.

www.skacelknitting.com

Summer Shawl Chart



- Knit
- Edge Stitch
- Yarnover
- Knit 2 together through the back loop
- Slip 2 stitches together as if to knit, k1, pass slipped stitches over stitch just knit

skacel collection, Inc.
 Copyright © 2011 - All rights reserved.
www.skacelknitting.com