

Tsunami MP.11 Model 5054-R

Wireless Point-to-Multipoint System

APPLICATIONS

- Emergency First Responders**
 Critical information delivery such as medical data and video feeds during in-progress events
- Enterprise Campus Connectivity**
 Extend main network to remote branch offices, warehouses or other out buildings without leased line
- Mobile Hot Spot**
 On-demand entertainment and broadband access solutions for ferry, transit busses and railway system commuters

The Next-Generation Broadband Wireless Access Solution

Like its predecessor, the 5054-R continues to offer a comprehensive feature set to future-proof wireless networks.

- With a Peltier heating and cooling technology inside a ruggedized enclosure, the 5054-R can be deployed in extreme weather conditions
- Support for three 5 GHz bands - 5.25, 5.47 and 5.725 GHz, 20 total non-overlapping channels and performance that scales from 6 to 36 Mbps, all selectable via simple user interfaces
- Advanced revenue-enhancing features are standard - including flexible bandwidth provisioning for DSL, T1 or Ethernet-like tiered services as well as NAT and DHCP for IP-based storage and e-mail hosting

Paving the Path to WiMAX Today

Drawing on Proxim's leadership in the WiMAX arena, the 5054-R has been developed as a platform to enable WiMAX applications. By deploying the 5054-R today, businesses are assured of a smooth transition to the WiMAX family of products.

- Equipped with software features to address the WiMAX markets such as: mobile hot-spot, MAN, cost-effective last mile access, security and surveillance
- Migration plan to support future WiMAX customers allowing business growth and network scalability
- Investment protection through common concept of network design and software feature sets, which

includes mobile roaming, rich management capabilities, most advanced encryption with AES and authentication via RADIUS, antenna alignment utility, and revenue-enhancing services with bandwidth control, NAT/ DHCP

Mobile Roaming Enables New Applications

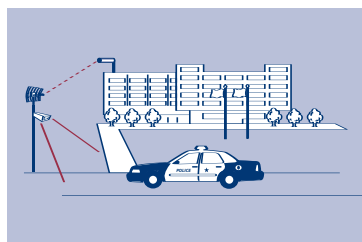
Proxim innovation delivers another wireless industry first - mobile roaming of Subscriber Units (SU) between Base Station Units (BSU). Public safety first responder networks, transportation system monitoring and telemetry and mobile security and surveillance are now all possible with a low cost, robust system.

- Fast handoff at speeds up to 200 km per hour (120 miles per hour)
- Customizable roaming parameter maintains minimum bandwidth required for application performance

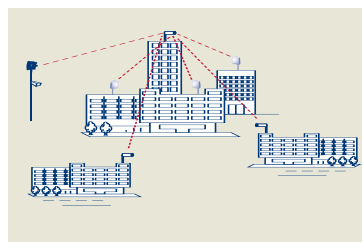
Adaptive Wireless Network Optimizes Performance

Using advanced OFDM technology and Wireless Outdoor Routing Protocol (WORP), 5054-R networks dynamically adapt to the ever-changing network load for optimum performance.

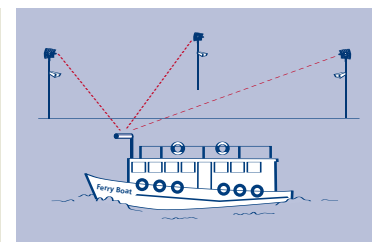
- WORP adapts to avoid collisions and maximizes data content with each transmission
- Dynamic Data Rate Selection automatically compensates for temporary link degradation maintaining robust connectivity and mitigating service calls



Emergency First Responders



Enterprise Campus Connectivity



Mobile Hot Spots

APPLICATIONS

- **Security and Surveillance**

Wireless solutions for bandwidth-intensive and high-definition IP-surveillance cameras located at important city and transportation infrastructure such as airports, bridges and trains

- **Business and Residential Last Mile Access**

Competitive broadband service alternative to DSL or cable modems for residences and T1 or Ethernet for businesses

- **Metropolitan Area Networks**

Secure and reliable connectivity between city buildings

Advanced Security Protects Privacy

Multiple security mechanisms protect operator, residential customer and enterprise privacy.

- Weatherized enclosure allows colocation on rooftops – limiting physical access
- Proxim's Wireless Outdoor Routing Protocol (WORP) prevents snooping common to Wi-Fi systems
- Advanced encryption protects over-the-air transmission
- Intracell blocking forbids direct communication between Subscriber Units
- BSU and SU mutual authentication eliminates unauthorized use of system by rogue SUs and man-in-the middle attacks
- Password protection of all remote management methods

Designed for Fast Installation and Lower Maintenance Cost

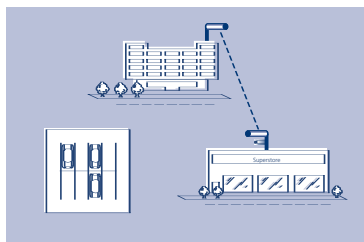
The 5054-R incorporates hardware and software features that reduce labor costs associated with initial deployment and post-sales maintenance.

- Decrease Subscriber Unit configuration time with integrated and dual-polarized 23-dBi antennas
- Eliminate guess work in locating the remote antennas with audible tone and real-time signal strength measurements
- Support for both local and remote management, removing the need for expensive on-site supports

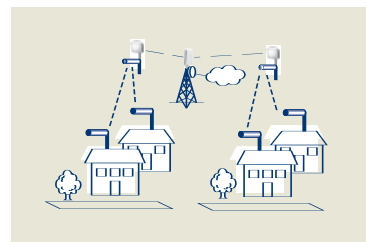
Investment Protection for Current Tsunami MP.11 Model 5054 (MP.11a) customers

Both the 5054 and the 5054-R can be deployed together with full interoperability and backward compatibility.

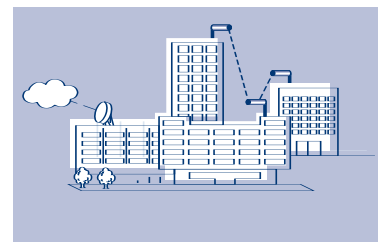
- No new training required with identical software and user interfaces
- Common accessories such as antennas, cables and surge arrestors reduce spare inventory
- Expanding a 5054 network by adding new 5054-Rs can be done incrementally and non-disruptively



Security and Surveillance



Last Mile Access



Metropolitan Area Networking

About Proxim

Proxim Corporation is a global leader in wireless networking equipment for Wi-Fi and broadband wireless networks. The company provides its enterprise and service provider customers with wireless solutions for the mobile enterprise, public hot spots, security and surveillance, last mile access, metropolitan area networks and voice and data backhaul.

Proxim Corporation
935 Stewart Drive
Sunnyvale, California 94085

tel: 800.229.1630
tel: 408.731.2700
fax: 408.731.3675

www.proxim.com



Tsunami MP.11 Model 5054-R Specifications

PERFORMANCE AND SCALABILITY

Best-in-class performance with WORP	By eliminating in-the-air collisions and maximizing data content for each transmission, WORP (Wireless Outdoor Router Protocol) significantly improves performance
Near line of sight capable	Line of sight and near line of sight connectivity extends deployment flexibility in rural as well as high-density urban areas
Highest performance per cell	Supports 6 sectors per cell with an aggregate data rate of 216 Mbps and throughput of 144 Mbps
Dense subscriber support per cell	Supports up to 1,500 subscribers with 6 sectors
Guaranteed data rate while roaming	Allows bandwidth-intensive applications, such as high-definition video streaming, in mobile environments

SECURITY

Unicast, multicast and broadcast storm control	User definable threshold levels prevent excessive bandwidth consumptions from degrading network performance
Packet filtering	MAC, EtherType, IP address filtering provides very granular networks security
Intracell blocking	Allows the BSU to act as the central policy enforcer for SU to SU communications, further enhancing subscriber units' privacy
WORP as a secure protocol	Unsnoopable by wireless decryptors, WORP is preferred for security and surveillance deployments
802.1x authentication	Supports include PEAP, EAP-TLS, EAP-TTLS, EAP-SIM, and EAP-MD5 to yield mutual authentication and dynamic, per-user, per-session encryption keys
Secure encryption technology	Supports for WEP, WEP+ and AES with TKIP encryption enhancements including key hashing (per-packet keying), message integrity check (MIC) and broadcast key rotation via WPA TKIP
Interference mitigation tool	Variable Receive Threshold, Transmit Power Control, 20 non-overlapping channels and Dynamic Frequency Selection

LOWER COST OF OWNERSHIP

Dynamic Data Rate Selection (DDRS)	Automatically optimizes throughput as link conditions change or as subscribers roam. Connectivity is automatically maintained when link quality degrades
Flexible and secure remote management	Supports remote management via Telnet, SNMP and web interfaces with password protections
Antenna alignment tool	Audible tone and CLI with running statistics displaying real-time signal strength ease antenna system installation
Comprehensive station statistics	Unit and group statistics are available for monitoring, planning and management of a wireless network
Lower recurring lease cost	Co-locating unit on rooftops with plenty of available space, lowers lease cost
Options for subscriber units with type-N or integrated antenna	Subscriber unit with type-N connector supports a broad selection of standard-based external antennas and subscriber unit with integrated antennas supports dual polarizations, vertical and horizontal, to minimize installation time
Extreme Operating Temperature	Rated for -33° to 60° Celcius, 5054-R can be deployed in hot or cold outdoor climates
Fast boot-up in cold climate	Sophisticated heating technology automatically heats the system to shorten boot-up time
Remote Reboot	System reboot or reset to factory default can be performed remotely via a power injector button

PRODUCT MODELS

5054-BSUR	Tsunami MP.11 Model 5054-R Base Station Unit with Type-N Connector
5054-SUA	Tsunami MP.11 Model 5054-R Subscriber Unit with Type-N Connector
5054-SUR	Tsunami MP.11 Model 5054-R Subscriber Unit with Integrated 23-dBi Antenna

INTERFACES

Wired Ethernet	10/100Base-TX Ethernet (RJ-45)
Wireless Protocol	WORP
Antenna Connector	Standard-N male (only for BSU and SU with Type-N connector)

RADIO AND TRANSMISSION SPECIFICATIONS

Modulation Method	OFDM
Unlicensed Frequencies	Americas (FCC): 5.25 to 5.35 GHz (3 channels) 5.725 to 5.850 GHz (5 channels) Europe (ETSI): 5.47 to 5.725 GHz (11 channels)
Licensed Frequency	UK: 5.725 - 5.850 GHz (4 channels)
Data Rate	6, 9, 12, 18, 24, 36 Mbps

UNIT PHYSICAL SPECIFICATIONS

Dimension	
Packaged :	14.57 x 13.70 x 8.19 in (370 x 348 x 208 mm)
Unpackaged: (BSUR and SUA)	10.5 x 10.5 x 3.25 in (267 x 267 x 83 mm)
Unpackaged (SUR):	12.60 x 12.60 x 3.50 in (320 x 320 x 89 mm)
Weight	
Packaged (BSUR and SUA):	9.2 lbs (4.2 kg)
Unpackaged weight (BSUR and SUA):	5.5 lbs (2.49 kg)
Packaged weight (SUR):	10.1 lbs (4.6 kg)
Unpackaged weight (SUR):	6.0 lbs (2.72 kg)

ENVIRONMENTAL SPECIFICATIONS

Temperature	
Operating:	-33° to 60°C (-27.5° to 140° Fahrenheit)
Storage:	-55° to 80°C (-41° to 176° Fahrenheit)
Humidity	
Operating:	Max 95% relative humidity (non-condensing)
Storage:	Max 95% relative humidity (non-condensing)
Water and Dust Proof	IP65

ELECTRICAL

Power Injector	
Input:	42 to 60 VDC
Output:	48 VDC
Power Consumption:	Maximum 20 Watt

MANAGEMENT

Local Management	RS-232 serial (RJ11 and DB-9)
Remote Management	Telnet, Web GUI, TFTP
SNMP	SNMPv1/v2; MIB-II ; Ethernet-like MIB; Bridge MIB; 802.3MAU; 802.11 MIB; Private MIB; Orinoco MIB; RFC 1157; RFC 1213; RFC 1643; RFC 1493; RFC 2668

MTBF AND WARRANTY

100,000 hours; 1-year on parts and labor

PACKAGE CONTENTS

Tsunami MP.11 Model 5054-R Base Station or Subscriber Unit, wall/ pole mounting bracket, power injector for 5054-R, country specific power cord, Ethernet cable weather-proof plug, Documentation and Software CD-ROM

For detailed technical specifications, please go to <http://www.proxim.com/products/bwa/multipoint/5054-R/techspecs.html>