

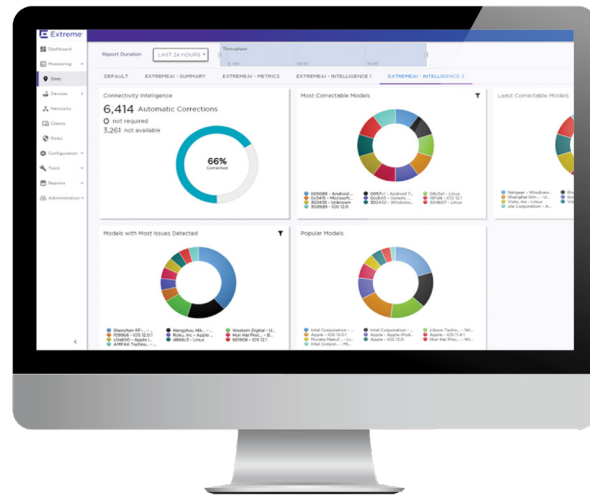
Highlights

Exceptional Wireless Experience

- Automatically detects and corrects problems before they become user-observable
- Human-like diagnosis using ML and corrections at machine speed
- Learns and adapts to changing local RF environment, devices, and neighbor networks
- Learns and adapts to global events such as known firmware/OS upgrades and related changes in behavior
- Reduces or eliminates the need for organizations to rely on deep RF knowledge or to undergo specialized training

Significantly reduces support and IT costs

- Instant resolution for most common Wireless LAN problems
- When external problems are detected, provides actionable alerts
- Real-time cross-layer analysis for root causing problems (e.g., RF, DNS, DHCP)
- When manual support is required, all the detailed information regarding the problem is available with a single click



ExtremeAI™ for Smart OmniEdge™

Transform the User Experience

ExtremeAI for Smart OmniEdge leverages artificial intelligence and machine learning to deliver a better wireless experience for both IT and the end-user. As business-critical systems, Wireless LANs demand flawless operation. Not only do they connect people, they also enable everything from point-of-sale systems to enterprise applications, real-time communication, video conferencing, and more. However, given their dynamic nature, they can be extremely challenging to maintain and operate. For IT departments to adequately support Wireless LAN applications and users, a proactive rather than reactive approach is required.

ExtremeAI for Smart OmniEdge revolutionizes the IT operations experience by providing proactive, automated, self-healing capabilities that enhance the end-user experience and reduce IT outages and help desk calls. By using machine learning technology and artificial intelligence to automate all aspects of WLAN RF management, including configuration, dynamic tuning and optimization, load balancing, troubleshooting, diagnosis and correction, the network continuously learns and adapts the Wi-Fi environment,

Proactive Wi-Fi Operations

At the core of ExtremeAI for Smart OmniEdge is a machine learning-based engine offering predictive analytics technology. The engine learns the typical characteristics and behaviors of devices, environment and network that impact a Wireless LAN's performance. To access the same level of information solely from human intelligence would be virtually impossible.

Statistical data or real-time information is communicated to the cloud, while the customer's data and content remain untouched. Once in the cloud, this information is processed in the ML Engine, in some cases in real-time, as network performance indicators. The information is organized, processed, and translated into solutions that trigger specific actions or actionable alerts, or automatically optimize and heal the network. By correlating the wide variety of data that can be gathered, the system quickly learns to identify issues with device compatibility, interoperability, access, use or misuse, and network security – as well as gaps in coverage or capacity in the network.

“No Worry” Wi-Fi: ExtremeAI for Smart OmniEdge provides 24x7 machine-based real-time diagnosis and optimization, proactively monitoring all network services associated with a Wireless LAN. The service takes responsibility for the performance of the wireless network day and night across all the enterprise's locations. When anomalies arise, it provides human-like decision making to raise actionable alerts, automatic correction of problems, or advise the customer how to address a problem even before it arises.

Subscription Based Cloud Service: ExtremeAI for Smart OmniEdge is a subscription-based service available on ExtremeWireless, ExtremeWireless WiNG, ExtremeCloud and ExtremeCloud Appliance. After subscribing to the service, the IT department specifies the services and interfaces that are to be enabled, and the security policies to be implemented. From that point, ExtremeAI takes over Wireless LAN management, proactively monitoring and managing the health of all Access Points and network operations. IT managers can easily access their network data through the user interface. It gives insight into what's happening in the network environment, and the mix of iOS, Android and other devices accessing an organization's system.

Secure: All customer's proprietary data remains untouched by the ExtremeAI for Smart OmniEdge service. All data traffic for the users remains within the local network. Only key statistical parameters are forwarded on to the cloud for processing by the Machine Learning Engine. The service isolates each customer's individual network data—and can also isolate data from multiple networks for a single customer if desired.

Intuitive Dashboard: The ExtremeAI dashboard enables IT managers to quickly and easily monitor the performance of their Wireless LAN network. Providing information such as top issues, root causes, mitigations and improvements; IT can witness firsthand the ROI improvements, including the number of manual hours of troubleshooting eliminated.

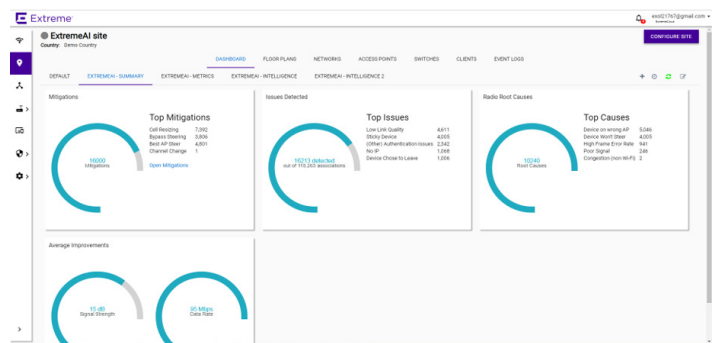


Figure 1: ExtremeAI - ROI, average gain

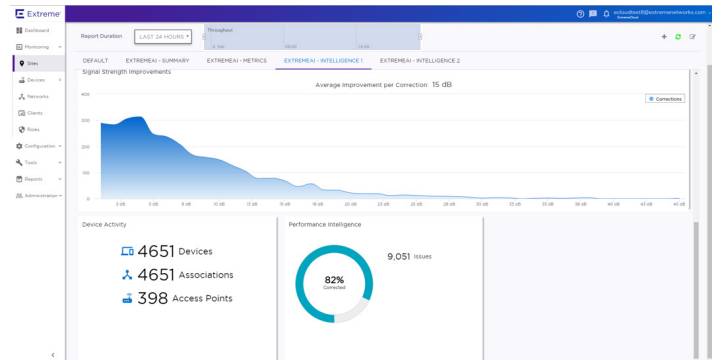


Figure 2: ExtremeAI - Performance Intelligence

Ordering Information

Product SKU	Short Description	Long Description
XAI-EW-1YR	XAI RTU EW TAC & APP 1YR	Extreme AI Application 1 Year Right-to-Use (RTU) & TAC: ExtremeWorks Subscription
XAI-EWP-1YR	XAI RTU EWP TAC & APP 1YR	ExtremeAI Application 1 Year Right-to-Use (RTU) & TAC: Premier Subscription
XAI-EW-3YR	XAI RTU EW TAC & APP 3YR	Extreme AI Application 3 Year Right-to-Use (RTU) & TAC: ExtremeWorks Subscription
XAI-EWP-3YR	XAI RTU EWP TAC & APP 3YR	ExtremeAI Application 3 Year Right-to-Use (RTU) & TAC: Premier Subscription
XAI-EW-5YR	XAI RTU EW TAC & APP 5YR	Extreme AI Application 5 Year Right-to-Use (RTU) & TAC: ExtremeWorks Subscription
XAI-EWP-5YR	XAI RTU EWP TAC & APP 5YR	ExtremeAI Application 5 Year Right-to-Use (RTU) & TAC: Premier Subscription

Please refer to the Release notes for list of supported access points.

Service and Support

Extreme Networks provides comprehensive service offerings that range from Professional Services to design, deploy and optimization of customer networks, customized technical training, to service and support tailored to individual customer needs. Please contact your Extreme Networks account executive for more information about Extreme Networks Service and Support. For full warranty terms and conditions please go to: support.extremenetworks.com.



<http://www.extremenetworks.com/contact>

©2019 Extreme Networks, Inc. All rights reserved. Extreme Networks and the Extreme Networks logo are trademarks or registered trademarks of Extreme Networks, Inc. in the United States and/or other countries. All other names are the property of their respective owners. For additional information on Extreme Networks Trademarks please see <http://www.extremenetworks.com/company/legal/trademarks>. Specifications and product availability are subject to change without notice. 22745-0419-19