

FRAME & FABRIC: ON-WALL

This low-profile frame is a sleek on-wall graphic system. Easy to install and lightweight, it can be anchored directly to the wall surface, or placed on wall cleats which allow for placement of different sized frames over time with minimal wall surface damage. The exclusive edge graphic system allows your staff to effortlessly change messaging with no tools required, saving on installation costs.

Recommended Graphic Print Material Details				
Substrate	Type of Coating	Total Weight	Tensile Strength (Warp)	Tear Strength
Polywoven	FR + Synthetic thickener	6.489 oz/yard ² 220 g/m ²	80 lbf/2in 350 N/50mm	228 lbf/2in 1000 N/50mm



FLOOR DECALS

Floor Decals are made from Pressure Sensitive Vinyl (PSV) with digital UV printing and die cutting to create large format, high impact areas on-court, on-stairs, in concourses and foyer and entrance areas. A highly durable floor laminate is applied to the top of each graphic to ensure a lifetime of use and more importantly, safety for attendees due to its non-skid nature.

Recommended Graphic Print Material Details					
Substrate	Thickness	Finish	Face/Color	Adhesive	Print Method
Cast PSV	3.4mil	Floor Laminate	White	LowTac PSV	UV



100mm LIGHTBOXES

Our most versatile and widely used lightbox is the 100mm frame system. This attention-grabbing branding solution can be configured to any size and we offer lighting color temperatures of either 4500K or 6000K to best suit the environment. Perimeter lighting or lattice type back lighting may be used depending on final size.

Recommended Graphic Print Material Details				
Substrate	Type of Coating	Total Weight	Tensile Strength (Warp)	Tear Strength
Luxe Premium	FR + Synthetic Thickener	4.129 lbf/yard ² 140 g/m ²	N/A	N/A



VENUE SEAT COVERS

Venue seat covers provide the ability to eliminate unused seats, creating an opportunity to expand the brand and monetize space. We recognize that each stadium has their own set of measurements and fastening requirements; we custom fabricate solutions that fit each and every time. Polywoven fabric is the preferred choice for its ability to show bold color and brilliant consistency across large areas.

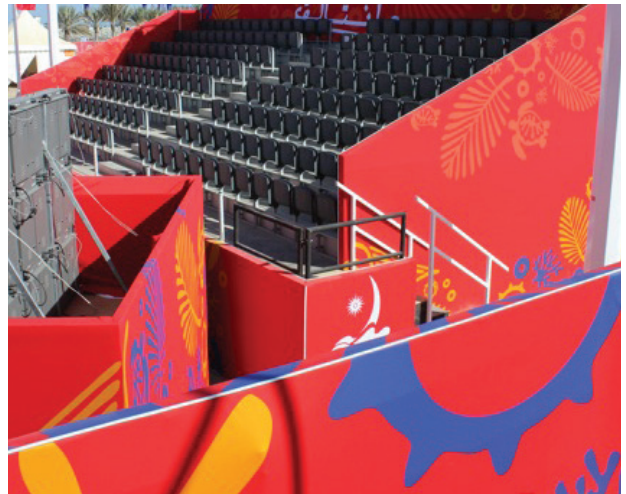
Recommended Graphic Print Material Details				
Substrate	Type of Coating	Total Weight	Tensile Strength (Warp)	Tear Strength
Polywoven	FR + Synthetic thickener	6.489 oz/yard ² 220 g/m ²	80 lbf/2i 350 N/50mm	228 lbf/2in 1000 N/50mm



BLEACHER WRAPS

Using either polywoven or perfknit fabrics, bleacher coverings are effective at concealing bleacher frames and scaffolding supports. These wraps add to existing branding and create a more consistent visual across the field-of-play, while also adding the ability to open up high visibility sponsor space.

Recommended Graphic Print Material Details				
Substrate	Type of Coating	Total Weight	Tensile Strength (Warp)	Tear Strength
Polywoven	FR + Synthetic thickener	6.489 oz/yard ² 220 g/m ²	80 lbf/2in 350 N/50mm	228 lbf/2in 1000 N/50mm



FENCE SCRIM / WINDSCREEN

Fence scrim is the ideal place for brand messaging, made using perfknit which is resilient to the most demanding outdoor environments. The material includes air vents to allow for maximum wind spillage. It allows for vertical stretch for tensioning but no stretch horizontally, maintaining unrivaled brand image quality with no distortion. Perfknit is perfectly suited for events, construction hoarding, or other unique applications.

Recommended Graphic Print Material Details				
Substrate	Type of Coating	Total Weight	Tensile Strength (Warp)	Tear Strength
Perfknit	DVB	3.392 oz/yard ²	175 lbs/in	40 lbs/in



FREESTANDING SIGNAGE

These frames are a great "all-rounder" capable of being used in a variety of applications. The 50mm frame or tube assembly was specifically engineered with extra internal supports, making it a leader in strength and durability. This strength also means that this frame can take on large graphics without warping or bending.

Recommended Graphic Print Material Details				
Substrate	Type of Coating	Total Weight	Tensile Strength (Warp)	Tear Strength
Polywoven	FR + Synthetic thickener	6.489 oz/yard ² 220 g/m ²	80 lbf/2in 350 N/50mm	228 lbf/2in 1000 N/50mm



FLAG & FLAGPOLES

Our tapered fiberglass flagpoles provide the utmost durability, wind load strength, aesthetics, and features. These flagpoles can be easily converted into vertical banner poles and installed with concrete bases along entrance ways and parking lot areas, creating an attention grabbing visual. Flagpoles range from 25' to 60' in overall height.

Recommended Graphic Print Material Details

Substrate	Type of Coating	Total Weight	Tensile Strength (Warp)	Tear Strength
Duraflag	FR + Synthetic thickener	5.539 oz/yard ² 120 g/m ²	80 lbf/2in 350 N/50mm	153 lbs/2in 670 N/50mm



FLAGTRAX®

Flagtrax® is a new and innovative banner pole system that eliminates the need for aerial rigs such as Boom trucks, thereby increasing staff safety, removing road blockages and opening up new areas of banner opportunities. The patented "push-pull" technology allows staff to raise and lower banners from the ground. Use in parking lots, on the exterior of buildings, on concourse pillars and any other high visibility area where vertical banners can make an impact.

Recommended Graphic Print Material Details

Substrate	Type of Coating	Total Weight	Tensile Strength (Warp)	Tear Strength
Duraflag	FR + Synthetic thickener	5.539 oz/yard ² 120 g/m ²	80 lbf/2in 350 N/50mm	153 lbs/2in 670 N/50mm



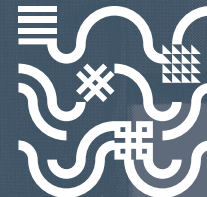
BRANDED BARRICADES

Create impactful branding on essential crowd control barricades. Event and sponsor branding are optimized on these highly visible areas where large volumes of people are waiting and receptive to messaging. Made with highly durable perfknit fabric or polywoven fabric, these displays are easy to install, manage, and remove.

Recommended Graphic Print Material Details

Substrate	Type of Coating	Total Weight	Tensile Strength (Warp)	Tear Strength
Polywoven	FR + Synthetic thickener	6.489 oz/yard ² 220 g/m ²	80 lbf/2in 350 N/50mm	228 lbf/2in 1000 N/50mm
Perfknit	DVB	3.392 oz/yard ²	175 lbs/in	40 lbs/in





MEDIA BACKDROPS

Media backdrops use polywoven fabric and a freestanding 50mm or tube frame. They are easily movable and can be situated in a variety of places including on stage, in the concourse, or any other media areas. The changeable fabric makes the system a long term choice that can be used for multiple events.

Polywoven fabric resists shine and impact from lighting, giving the perfect matte backdrop for use with still cameras and broadcast. In addition, dye sublimation printing provides incredible colors and vivid detail.



Recommended Graphic Print Material Details				
Substrate	Type of Coating	Total Weight	Tensile Strength (Warp)	Tear Strength
Polywoven	FR + Synthetic thickener	6.489 oz/yard ² 220 g/m ²	80 lbf/2in 350 N/50mm	228 lbf/2in 1000 N/50mm

SCAFFOLDING & STAGE COVERS

Scaffolding and staging areas can be covered by mesh vinyl banner or perfknit fabric. Quality finishing with high tensile strength webbing and grommets ensure a strong hold and taught finish around temporary structures. Vivid, extended color palettes available on a state-of-the-art UV printer create high impact, enduring visuals.



Recommended Graphic Print Material Details					
Substrate	Type of Coating	Total Weight	Tensile Strength (Warp)	Tear Strength	
Perfknit	DVB	3.392 oz/yard ²	175 lbs/in	40 lbs/in	

Substrate	Thickness	Finish	Face/Color	Adhesive	Print Method
Vinyl Mesh	8 oz	Perforated	White	N/A	UV

WAYFINDING SIGNAGE

Utilizing the modular display components, wayfinding and traffic information systems are a necessity for stadiums, events, and venues. The ease of navigation directly ties to the customer/fan experience. Our world-class wayfinding design professionals deliver industry best practices in pictograms, color, and overall information management.



Recommended Graphic Print Material Details					
Substrate	Thickness	Finish	Face/Color	Adhesive	Print Method
DiBond	3mm	Smooth Semigloss	White	N/A	UV