

Scrubber Level Control System (SLS)

Automatic Level Control for Gas Scrubber Applications

The FW Murphy Gas Compressor Scrubber Level System

The system provides for liquid control in gas scrubber applications by dumping liquids to drain and protect compressors with high liquid level switch. Wetted metal parts are made to survive constant use in corrosive environments.

Filter Regulator and Gage

Instrument-quality
 Air/Gas supply

Pneumatic Level Control

Float-actuated level snap-acting switch controls pneumatic pressure to open and close Dump Valve. LS200NDVOR: Dump Valve Operator, pressure regulator and pressure indicating gage.

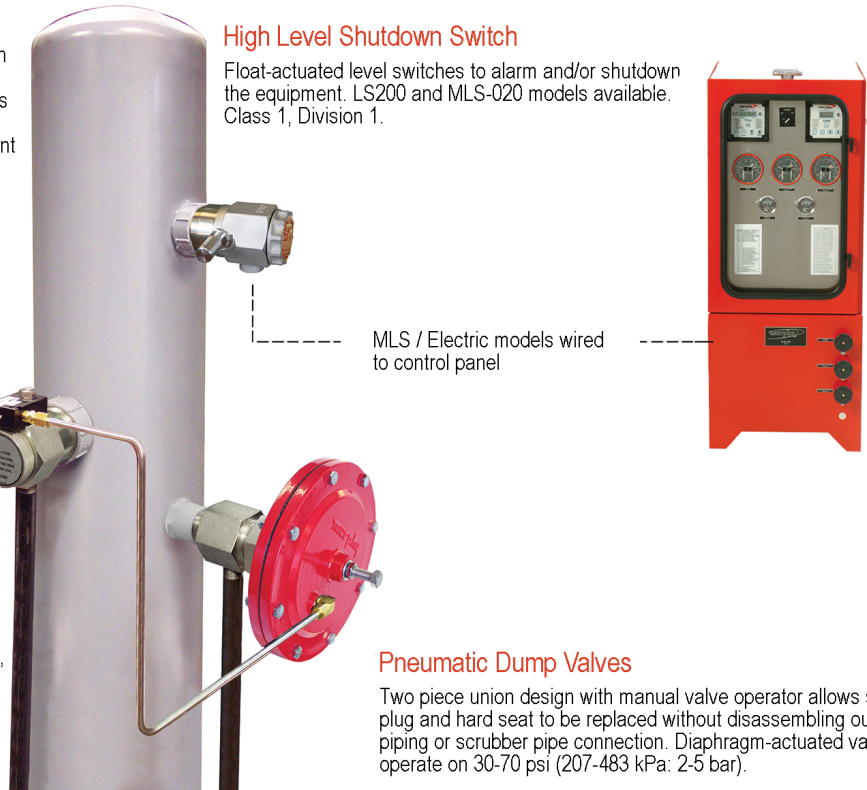
High Level Shutdown Switch

Float-actuated level switches to alarm and/or shutdown the equipment. LS200 and MLS-020 models available. Class 1, Division 1.

MLS / Electric models wired to control panel

Pneumatic Dump Valves

Two piece union design with manual valve operator allows soft plug and hard seat to be replaced without disassembling outlet piping or scrubber pipe connection. Diaphragm-actuated valves operate on 30-70 psi (207-483 kPa: 2-5 bar).



You Save Money By Purchasing The SLS System Which Includes the Following:

- **LS200, MLS-020*** High Level Shutdown Switch
- **DVU**** Pneumatic Dump Valve
- **LS200NDVOR** Pneumatic Level Control with:
- **Filter Regulator with Gage**

For detailed information on Level Switches and Dump Valves visit www.fwmurphy.com.

* Choose model using the How To Order matrix.

**Specify Dump Valve model when ordering.

Service Tip

The Gage and Filter/Regulator on the LS200NDVOR help keep the control medium clean and dry. It also allows operator to adjust pressure to recommended level of 30-70 psig. The Gage and Filter/Regulator are recommended to help increase system life and trouble-free operation.

Level Switches

- Designed for Harsh Gas Compressor Scrubber Applications
- Stainless Steel Float: Specific gravity varies by model and configuration, see Specific Gravity.
- For Separators/Scrubbers rated for up to 2000 psi (13.8 MPa) [138 bar] Working Pressure
- Electric and Pneumatic Models Available

Dump Valve Operator/ Dump Valve

- Hex Union Allows Plug and Seat Replacement Without Piping Removal
- Operates on 30–70 psi (207–483 kPa) [2.07–4.83 bar] Control Pressure
- Manual Valve Operator

Minimum Allowable Specific Gravity			
Model	Float Extension Length (inch)	Pressure (psi)	Specific Gravity
LS200	0	2000	0.55
	1		0.7
LS200NDVO	0	2000	0.63
	1		0.73
MLS-020	0	2000	0.5
	1		0.65

How To Order

Approximate Shipping of SLS2120 model
 Weight: 19 lb. 6 oz. (8.7 kg)
 Dimensions: (w x h x d) 15 x 15 x 12 in. (381 x 381 x 305 mm)

SLS

The SLS Kits Include LS200, LS200NDVO and a DVU Valve.

SLS150		-	LR			
Options						
Blank = Include Filter/ Regulator						
LR = Less Regulator						
Model	Dump Valve	Inlet	Outlet	Trim Size	Maximum Working Pressure	
SLS150	DVU150	1" NPT	1/2" NPT	0.359 IN. (9 MM)	1800 psi	
SLS175	DVU175	1" NPT	3/4" NPT	0.359 IN. (9 MM)	1800 psi	
SLS2120	DVU2120	2" NPT	1" NPT	0.436 IN. (11 MM)	2000 psi	

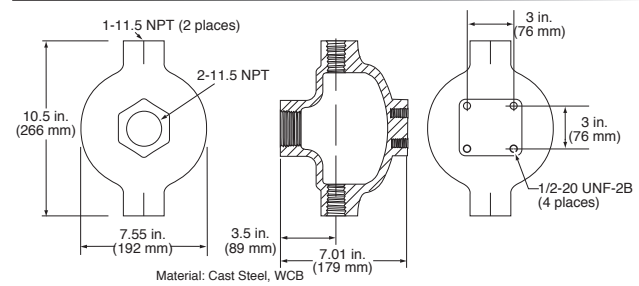
MSLS

The MSLS Kits Include MLS-020, LS200NDVO and a DVU Valve.

MSLS150		-	LR	TF		
Options						
Blank = Include Filter/ Regulator						
LR = Less Regulator						
Options						
Blank = Without Test Function						
TF = Test Function						
Model	Dump Valve	Inlet	Outlet	Trim Size	Maximum Working Pressure	
MSLS150	DVU150	1" NPT	1/2" NPT	0.359 IN. (9 MM)	1800 psi	
MSLS175.5*	DVU175	1" NPT	3/4" NPT	0.359 IN. (9 MM)	1800 psi	
MSLS175	DVU175	1" NPT	3/4" NPT	0.359 IN. (9 MM)	1800 psi	
MSLS2120	DVU2120	2" NPT	1" NPT	0.436 IN. (11 MM)	2000 psi	

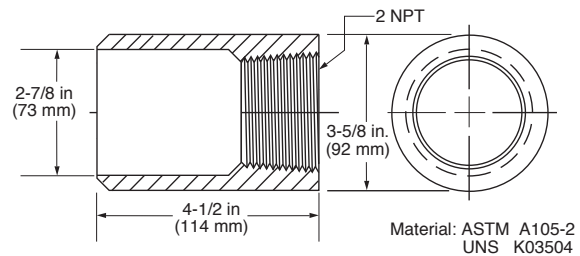
*Substitutes L1200NDVO for LS200NDVO for 0.5 specific gravity applications

Float Chamber 15051098



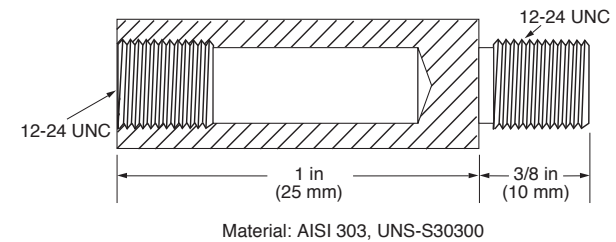
Operating Pressure: 2000 psi (13.8 MPa) [138 bar]
 Operating Temperature: 400 deg F (204 deg C)
 Shipping Weight: 32 lb. (14.5 kg)

Weld Collar (LS200 only) 15050375

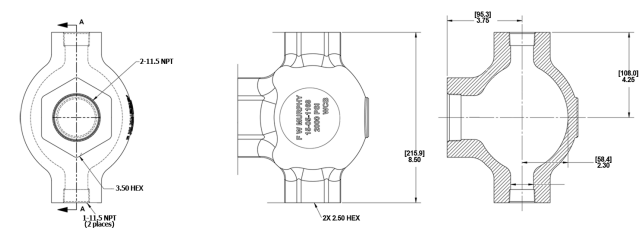


Operating Pressure: 2000 psi (13.8 MPa) [138 bar]
 Operating Temperature: 400 deg F (204 deg C)
 Shipping Weight: 6 lb. (2.7 kg)

Float Shaft Extension 15000478



Series 100 Float Chamber 15700799



Operating Pressure: 2000 psi (13.8 MPa) [138 bar]
 Operating Temperature: 400 deg F (204 deg C)
 Shipping Weight: 18 lb. (8.16 kg)

FW MURPHY PRODUCTION CONTROLS
 SALES, SERVICES & ACCOUNTING
 5417 S. 122ND E. AVE.
 TULSA, OK 74146

CONTROL SYSTEMS & SERVICES
 105 RANDON DYER ROAD
 ROSENBERG, TX 77471

MANUFACTURING
 5757 FARINON DRIVE
 SAN ANTONIO, TX 78249

DOMESTIC SALES & SUPPORT

FW MURPHY PRODUCTS
 PHONE: 918 317 4100
 EMAIL: INFO@FWMURPHY.COM
 WWW.FWMURPHY.COM

FW MURPHY CONTROL SYSTEMS & SERVICES
 PHONE: 281 633 4500
 EMAIL: CSS-SOLUTIONS@FWMURPHY.COM

INTERNATIONAL SALES & SUPPORT

CHINA
 PHONE: +86 571 8788 6060
 EMAIL: APSALES@FWMURPHY.COM

LATIN AMERICA & CARIBBEAN
 PHONE: +1 918 317 2500
 EMAIL: LASALES@FWMURPHY.COM

SOUTH KOREA
 PHONE: +82 70 7951 4100
 EMAIL: SKOREASALES@FWMURPHY.COM



FM 668576 (San Antonio, TX - USA)
 FM 668933 (Rosenberg, TX - USA)



FM 523851 (China) TS 589322 (China)